



Exploring Community Partnerships in Learning, Teaching and Assessment

Enhancement Themes Conference
Wednesday 14th June

Student Led Project 2022-23

Student-Led Project (SLP)

- Partnership working between QAA Scotland and sparqs.
- Activity led by a Steering Group – chaired by the Enhancement Themes Student Lead.
- Each year, the SLP chooses a new topic to focus on under the wider Enhancement Theme.

Student-Led Project Steering Group 2021-22

- **Oluwafunmilola Akinoso**, President Education & Welfare, RGU Students' Union
- **Hitanshi Bidani**, ET Deputy Student Lead, University of St Andrews
- **Hannah Carragher**, President of Curriculum & Engagement, New College Lanarkshire
- **Heather Innes**, ET Student Lead, Highlands & Islands Students' Association
- **Micaela Levesque**, VP Education, Glasgow University Students' Representative Council
- **Noah Schott**, Director of Education, University of St Andrews
- **Akua Serwaa Agyeman**, VP Education, Aberdeen University Students' Association

Supported by sparqs (Megan Brown) and QAA Scotland (Demelza Curnow)



This year's theme:

“Exploring Community Partnerships for the Future of Further and Higher Education”

- When they are successful, community partnerships can be enormously enriching for everyone, but what does that look like and how can community partnerships be built and strengthened for the enhancement of the student learning experience?
- This project aims to explore how these different communities interact and enrich each other and how individuals move within and between them.

Outcomes of the project:

1

Capture current good practice in working with the community.

2

Demonstrate to the sector the experience of diverse student groups learning in Scotland's communities.

3

Enable students to build relationships with their local communities.

4

Explore how community partnerships can be incorporated into learning, teaching and assessment.

Outputs of the project:

A set of **guidelines** for student groups and institutions to develop effective community partnerships.

A suite of **case studies** of current community partnerships in Scotland.

A **photo gallery** which explores how students in Scotland's colleges and universities interact with and learn in their communities.

A **workshop** that explores students, students' associations and their institutions engage with the community on learning, teaching and assessment, with follow up reflection on sector-wide activity.

Today's workshop

- What are the **existing examples of practice** in Scotland where institutions are working in partnership with the community on learning and teaching?
- A specific focus on **learning, teaching and assessment**, but if you have contributions that relate to areas outside of this please do share!
- What does 'community' mean in the context of **hybrid and online courses**?
- This workshop will be an opportunity to **explore these questions** as a sector and to consider how we can best create and sustain supportive and effective community partnerships which provide benefits for all parties.
- After this workshop, we will identify your key themes and ideas and create a **written summary** to publish on the ET website.

Activity 1:

- What is the **value** of community partnerships to each stakeholder group?
What **benefits** are there for each?
 - Students
 - Institutional staff
 - Community partners
- Add your thoughts to your A3 handout.
- You have 7 minutes!





Over to you!

Activity 2

- How can we **develop successful community partnerships** in learning, teaching and assessment?
- Three areas:
 - **Establishing** community partnerships
 - **Delivering** community partnerships
 - **Evaluating and enhancing** community partnerships



Activity 2

- Consider all **levels** of study, **modes** of study e.g. online and in-person, different **subject areas**, different **locations** (e.g. rural, city centre), different groups and **demographics** of students.
- How can **students be involved** in each of these stages?

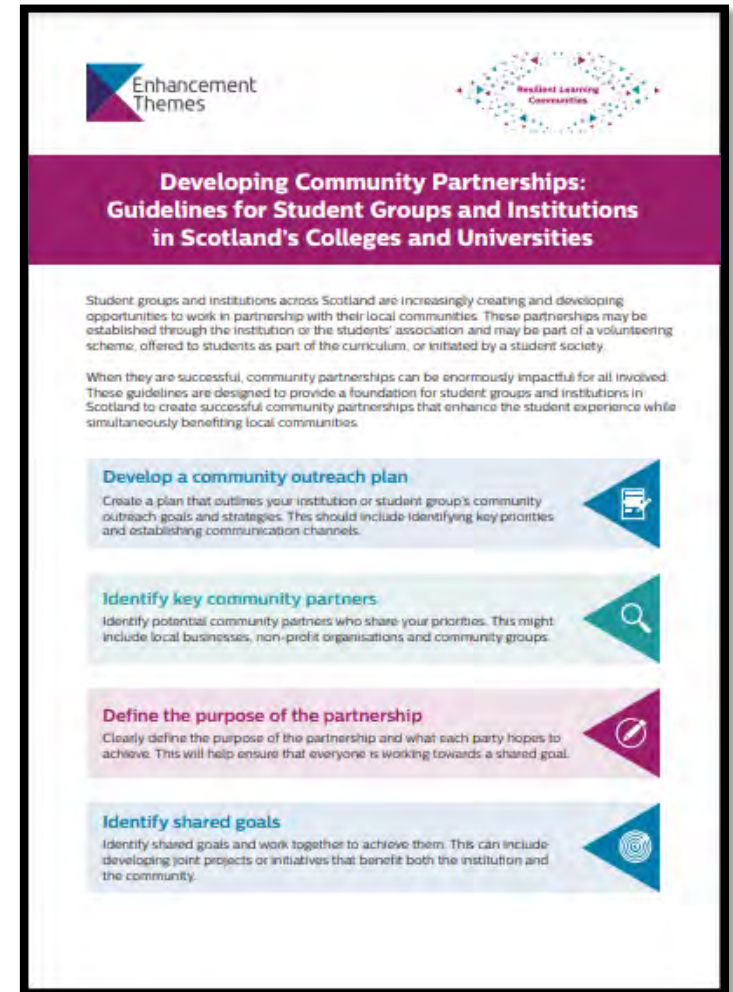




Over to you!

Some of our top tips for creating & developing community partnerships:

- Define the **purpose** of the partnership: Clearly define the purpose of the partnership and what each party hopes to achieve. This will help ensure that everyone is working towards a shared goal.
- Establish clear **communication** channels: Establish clear communication channels and keep all partners informed of progress and any changes. Communication is essential for building trust and maintaining good relationships.



Some of our top tips

- **Collaborate** with other institutions: Collaborate with other institutions and students' associations to create joint initiatives that benefit local communities. This can include joint research projects or sharing resources to create a greater impact.
- **Monitor and evaluate** progress: Regularly monitor and evaluate progress towards shared goals. This will help identify areas for improvement and ensure that the partnership is achieving its intended outcomes.
- **Recognise** contributions: Recognise the contributions of all partners and celebrate successes. This will help build trust and maintain a positive working relationship.

Thank you!

- We will take away your ideas from today to create an accompanying written resource to today's workshop.
- All our Student-Led Project resources can be found on the Enhancement Themes website:
<https://www.enhancementthemes.ac.uk/resilient-learning-communities/exploring-community-partnerships-for-the-future-of-further-and-higher-education>
- Any questions, contact Megan at Megan.Brown@sparqs.ac.uk